



# FIRE DEPARTMENT CONNECTOR

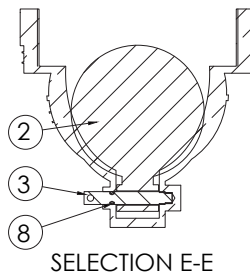
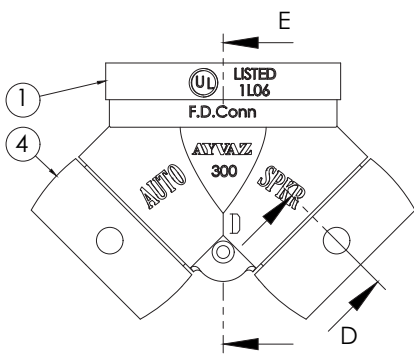
## Fire Department Connection / Model AFDC-100



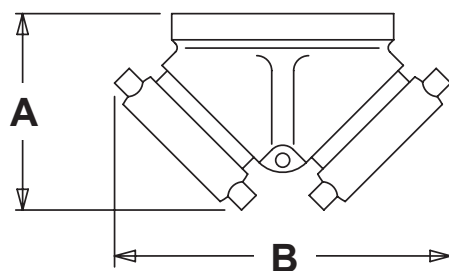
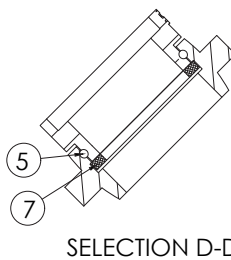
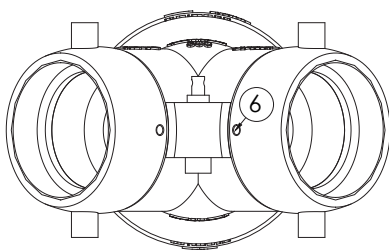
Model AFDC-100 is used as auxiliary connections through which the fire department can pump water to supplement the fire protection water supply. Provides minimum 250 gpm (950 lpm) flow per 2 1/2" inlet.

### Specifications

- Body** : Cast Brass
- Size** : 4" F NPT x 2 1/2" F NST x 2 1/2" F NST
- Description** : Straightway Single Clapper
- Max Working Pressure** : 300 psi (2070kPa)



MATERIAL LIST		
NO.	PART	MATERIAL
1	Body	ASTM C85700
2	Clapper	ASTM C85700
3	Hinge Pin	ASTM C85700
4	Swivel	ASTM C85700
5	Stainless Ball Bearing	AISI 304
6	Set Screw	ASTM C36000
7	Rubber Facing	Valcanized Rubber
8	O-ring	NBR



SIZE	
A	140
B	206