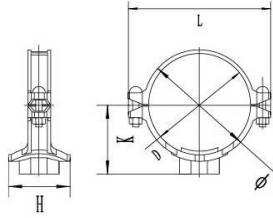


XGQT03S

Mechanical Tee Threaded



The specific items list shall be subject to the public notice of FM and UL website.

Nominal Size mm/in	Pipe O.D mm/in	Working Pressure PSI/MPa	Bolt Size No. -Size mm	Dimensions mm/in				Hole cutting dimensions mm/in	UL	FM
				Ø	L	K	H			
40X25 1½x1	48.3X33.7 1.900X1.327	300 2.07	2-M10x45	67 2.637	112 4.409	56 2.204	61 2.401	32 1.259	•	
50X15 2X½	60.3X21.3 2.375X0.839	300 2.07		75 2.953	116 4.567	57 2.362	69 2.717	38 1.496		
50X20 2X½	60.3X26.9 2.375X1.059	300 2.07		75 2.953	116 4.567	57 2.362	69 2.717	38 1.496		
50X25 2X1	60.3X33.7 2.375X1.327	300 2.07	2-M10x55	75 2.953	116 4.567	60 2.362	69 2.717	38 1.496	•	•
50X32 2X1½	60.3X42.4 2.375X1.669	300 2.07		75 2.953	116 4.567	60 2.362	69 2.717	46 1.811	•	•
50X40 2X1½	60.3X48.3 2.375X1.900	300 2.07		75 2.953	116 4.567	60 2.362	69 2.717	46 1.811	•	•
65X25 2½X1	73X33.7 2.874X1.327	300 2.07		93 3.661	136 5.354	62 2.441	77 3.031	38 1.496		
65X32 2½X1¼	73X42.4 2.874X1.669	300 2.07		93 3.661	136 5.354	62 2.441	85 3.346	46 1.811	•	
65X40 2½X1½	73X48.3 2.874X1.901	300 2.07		93 3.661	136 5.354	62 2.441	85 3.346	51 2.008		
65X50 2½X2	73X60.3 2.874X2.375	300 2.07		93 3.661	136 5.354	78 3.071	85 3.346	61 2.402		
65X20 2½X¾	76.1X26.9 2.996X1.059	300 2.07	2-M12x60	102 4.016	144 5.669	67 2.637	77 3.031	38 1.496		
65X25 2½x1	76.1X33.7 2.996X1.327	300 2.07		102 4.016	144 5.669	70 2.756	77 3.031	38 1.496	•	•
65X32 2½x1¼	76.1X42.4 2.996X1.669	300 2.07		102 4.016	144 5.669	70 2.756	83 3.268	46 1.811	•	•
65X40 2½x1½	76.1X48.3 2.996X1.900	300 2.07		102 4.016	144 5.669	70 2.756	83 3.268	51 2.008	•	•
65X40 2½x2	76.1X60.3 2.996X2.375	300 2.07		102 4.016	144 5.669	74 2.913	83 3.268	51 2.008	•	
80X15 3X½	88.9X21.3 3.500X0.839	300 2.07		102 4.016	152 5.984	73 2.874	77 3.031	38 1.496		
80X20 3X½	88.9X26.9 3.500X1.059	300 2.07		102 4.016	152 5.984	73 2.874	77 3.031	38 1.496		
80X25 3X1	88.9X33.7 3.500X1.327	300 2.07		114 4.488	152 5.984	82 3.228	77 3.031	38 1.496	•	•
80X32 3X1¼	88.9X42.4 3.500X1.669	300 2.07		114 4.488	152 5.984	82 3.228	83 3.268	46 1.811	•	•
80X40 3X1½	88.9X48.3 3.500X1.900	300 2.07		114 4.488	152 5.984	82 3.228	92 3.622	51 2.008	•	•
80X50 3X2	88.9X60.3 3.500X2.375	300 2.07		114 4.488	152 5.984	82 3.228	99 3.898	61 2.402	•	•
100X25 4x1	108.0X33.7 4.252X1.327	300 2.07	2-M12x65	135 5.315	172 6.772	87 3.425	77 3.031	38 1.496		
100X32 4x1¼	108.0X42.4 4.252X1.669	300 2.07		135 5.315	172 6.772	87 3.425	83 3.268	46 1.811		
100X40 4x1½	108.0X48.3 4.252X1.900	300 2.07		135 5.315	172 6.772	87 3.425	92 3.622	51 2.008		
100X50 4x2	108.0X60.3 4.252X2.375	300 2.07		135 5.315	172 6.772	87 3.425	97 3.819	61 2.402		
100X65 4x2½	108.0X76.1 4.252X2.996	300 2.07		135 5.315	172 6.772	87 3.425	112 4.409	70 2.756		
100X25 4x1	114.3X33.7 4.500X1.327	300 2.07		140 5.512	188 7.402	93 3.661	77 3.031	38 1.496	•	•
100X32 4x1¼	114.3X42.4 4.500X1.669	300 2.07		140 5.512	188 7.402	93 3.661	83 3.268	46 1.811	•	•
100X40 4x1½	114.3X48.3 4.500X1.900	300 2.07		140 5.512	188 7.402	93 3.661	92 3.622	51 2.008	•	•
100X50 4x2	114.3X60.3 4.500X2.375	300 2.07		140 5.512	188 7.402	93 3.661	97 3.819	61 2.402	•	•
100X65 4x2½	114.3X76.1 4.500X2.996	300 2.07		140 5.512	188 7.402	93 3.661	123 4.843	81 3.189	•	•
100X80 4X3	114.3X88.9 4.500X3.500	300 2.07		140 5.512	188 7.402	93 3.661	125 4.921	86 3.386	•	
125X25	133.0X33.7 5.236X1.327	300 2.07		160 6.299	210 8.268	100 3.937	77 3.031	38 1.496		
125X32	133.0X42.4 5.236X1.669	300 2.07		160 6.299	210 8.268	100 3.937	83 3.268	46 1.811		
125X40	133.0X48.3 5.236X1.900	300 2.07		160 6.299	210 8.268	100 3.937	92 3.622	51 2.008		
125X50	133.0X60.3 5.236X2.375	300 2.07		160 6.299	210 8.268	100 3.937	97 3.819	61 2.402		
125X65	133.0X76.1 5.236X2.996	300 2.07	2-M16x75	160 6.299	210 8.268	100 3.937	123 4.843	81 3.189		
125X25	139.7X33.7 5.500X1.327	300 2.07		168 6.614	220 8.661	100 3.937	77 3.031	38 1.496	•	•
125X32	139.7X42.4 5.500X1.669	300 2.07		168 6.614	220 8.661	100 3.937	83 3.268	46 1.811	•	•
125X40	139.7X48.3 5.500X1.900	300 2.07		168 6.614	220 8.661	100 3.937	92 3.622	51 2.008	•	•
125X50	139.7X60.3 5.500X2.375	300 2.07		168 6.614	220 8.661	107 4.213	97 3.819	61 2.402	•	•